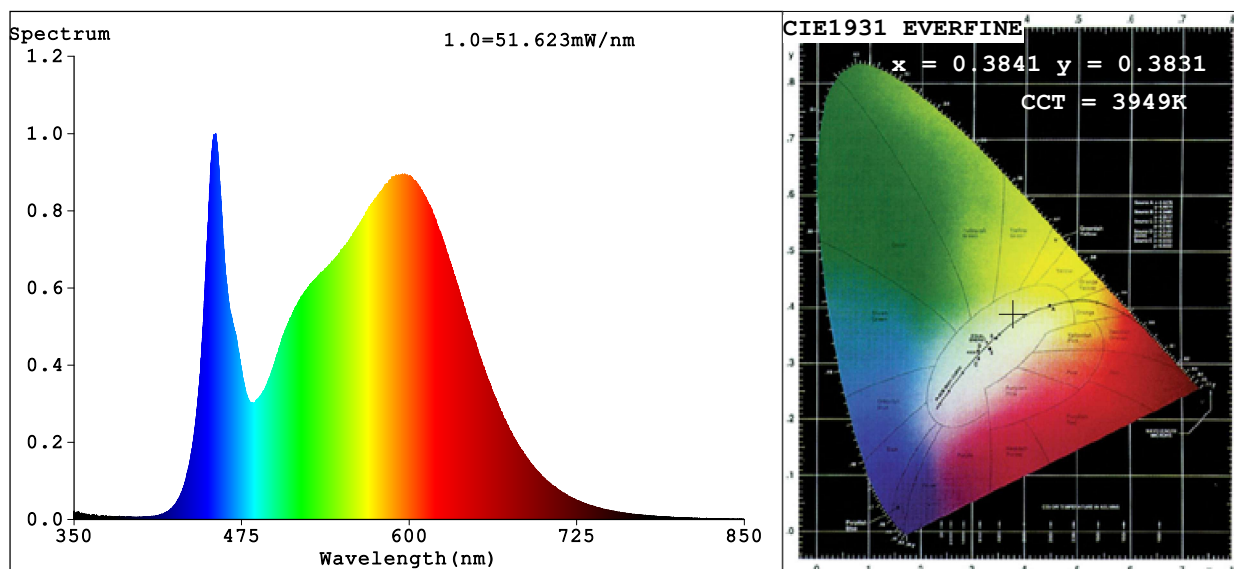


Spectrum Test Report



Color Parameters:

Chromaticity Coordinate: $x=0.3841$ $y=0.3831$ $u'=0.2250$ $v'=0.5049$

CCT=3949K (Duv=0.0019) Dominant WL:Ld =578.3nm Purity=30.2%

Ratio:R=18.5% G=77.6% B=3.9%; Peak WL:Lp=455.6nm FWHM=22.9nm

Render Index:Ra=83.4 CRI=76.9 TM30:Rf=82 Rg=93

R1 =82 R2 =91 R3 =96 R4 =80 R5 =81 R6 =88 R7 =85

R8 =63 R9 =8 R10=79 R11=79 R12=60 R13=85 R14=98 R15=75

Photo Parameters:

Flux = 2631 lm Eff. : 156.12 lm/W Fe = 7.948 W

Electrical parameters:

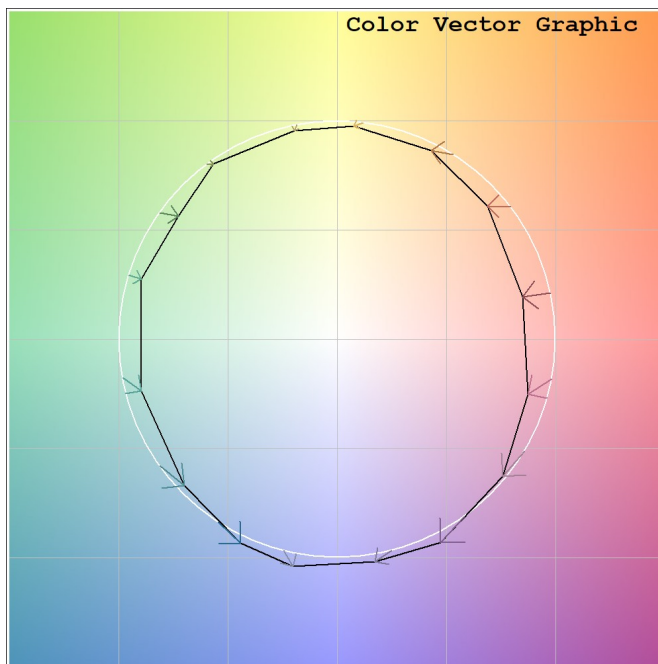
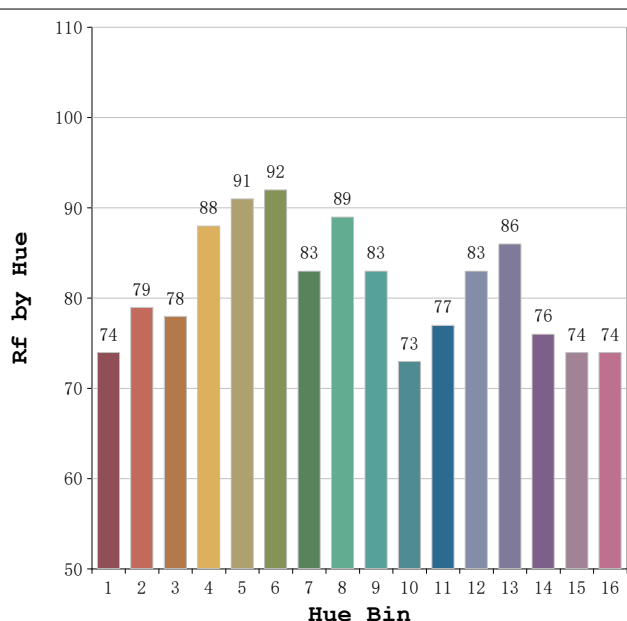
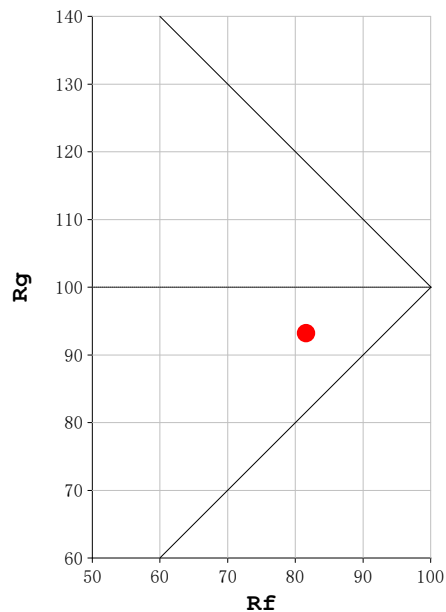
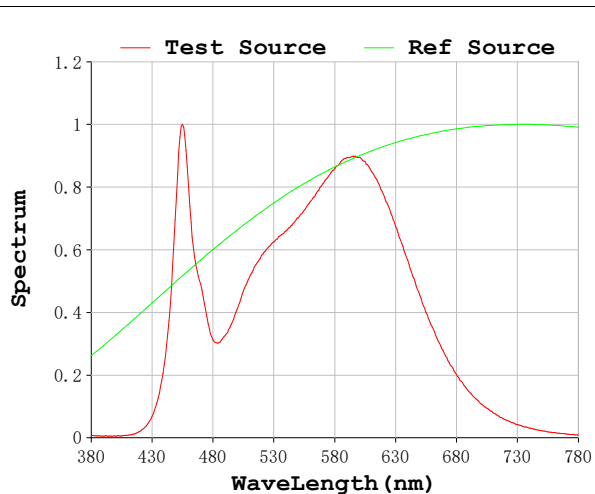
V = 23.998 V I = 0.7021 A P = 16.85 W PF = 1.000

Status: Integral T = 545 ms Ip = 51093 (78%)

Model:Ecoled Roll to roll
Tester:Sergio Carneros
Temperature:20Deg
Manufacturer:Luz Negra

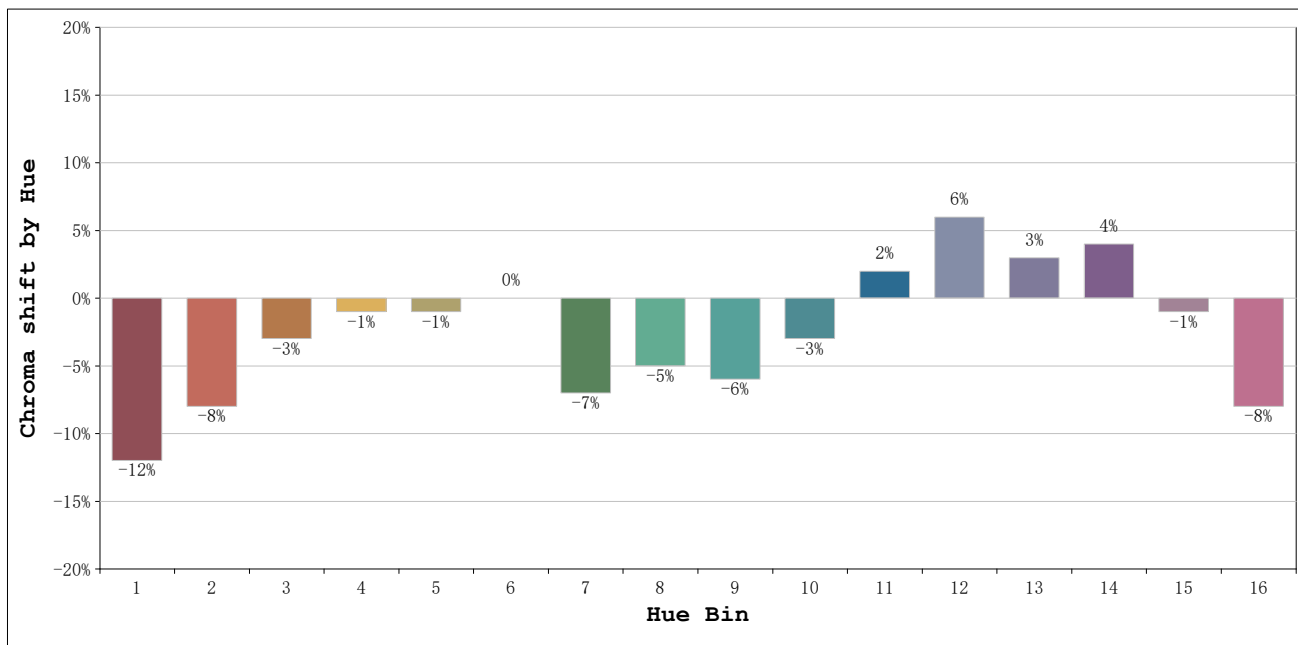
Number: 31.261
Date:2025-06-16 16:49:40
Humidity:50%
Remarks:100cm de tira flexible

Rf: 82 **CCT: 3949 K** **u': 0.2250**
Rg: 93 **Duv: 0.0019** **v': 0.5049**



Model:Ecoled Roll to roll
 Tester:Sergio Carneros
 Temperature:20Deg
 Manufacturer:Luz Negra

Number: 31.261
 Date:2025-06-16 16:49:40
 Humidity:50%
 Remarks:100cm de tira flexible



			Graphic shift(%)	
Hue Bin	Hue Angle	Rf	Chroma	Hue
1	0.0° - 22.5°	74	-12	1
2	22.5° - 45.0°	79	-8	6
3	45.0° - 67.5°	78	-3	9
4	67.5° - 90.0°	88	-1	4
5	90.0° - 112.5°	91	-1	2
6	112.5° - 135.0°	92	0	-1
7	135.0° - 157.5°	83	-7	-3
8	157.5° - 180.0°	89	-5	1
9	180.0° - 202.5°	83	-6	8
10	202.5° - 225.0°	73	-3	14
11	225.0° - 247.5°	77	2	14
12	247.5° - 270.0°	83	6	5
13	270.0° - 292.5°	86	3	-7
14	292.5° - 315.0°	76	4	-15
15	315.0° - 337.5°	74	-1	-14
16	337.5° - 360.0°	74	-8	-8

Model:Ecoled Roll to roll
 Tester:Sergio Carneros
 Temperature:20Deg
 Manufacturer:Luz Negra

Number: 31.261
 Date:2025-06-16 16:49:40
 Humidity:50%
 Remarks:100cm de tira flexible